

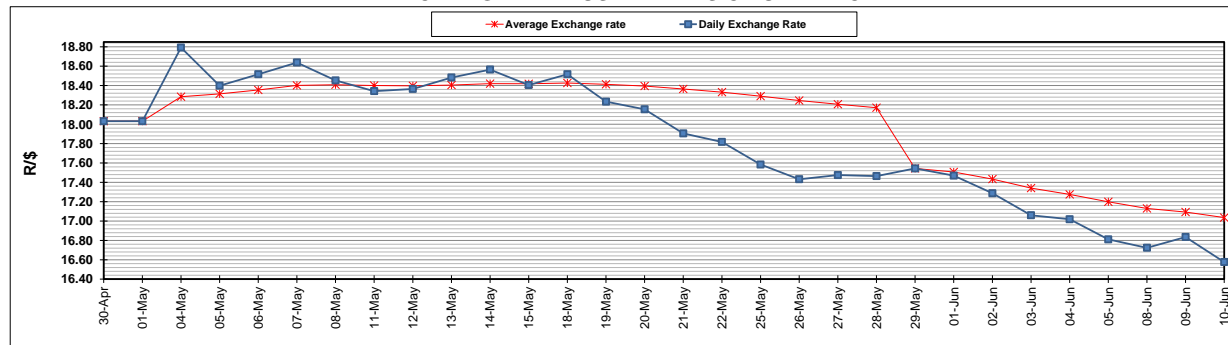
	PETROL 95 ULP	PETROL 93 ULP & LRP	DIESEL 0.05%	DIESEL 0.005%	ILL. PAR.
GAUTENG PUMP PRICE (SA c/l) AS FROM 03/06/2020	1,340.000	1,320.000	-	-	-
WHOLESALE PRICE (SA c/l) AS FROM 03/06/2020	-	-	1,130.560	1,138.960	489.828
SINGLE NATIONAL MAXIMUM RETAIL PRICE	-	-	-	-	597.000
BASIC FUEL PRICE - 10/06/2020 (SA c/l)	540.513	521.899	544.137	547.881	488.837
PRESS RELEASE CONTRIBUTION TO BFP 03/06/2020 - 10/06/2020 (SA c/l)	392.770	382.770	379.630	388.030	285.128
UNIT OVER/(UNDER) RECOVERY - 10/06/2020 (SA c/l)	(147.743)	(139.129)	(164.507)	(159.851)	(203.709)
AVERAGE BASIC FUEL PRICE 29/05/2020 - 10/06/2020	518.308	497.809	518.658	523.129	465.005
AVERAGE UNIT OVER/(UNDER) RECOVERY 29/05/2020 - 10/06/2020	(164.872)	(154.373)	(146.361)	(142.099)	(193.210)

ANALYSIS MOVEMENT OF AVERAGE OVER/(UNDER) RECOVERY

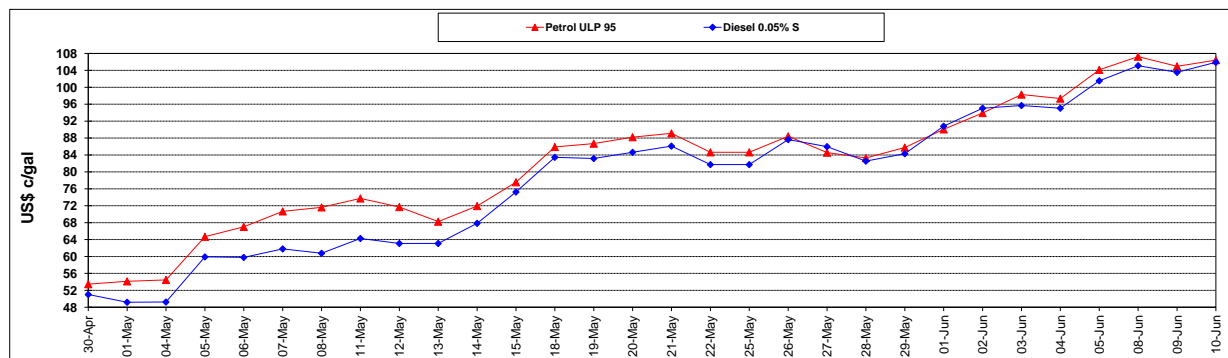
	PETROL 95	PETROL 93	DIESEL 0.05%	DIESEL 0.005%	ILL. PAR.
- MOVEMENT IN INTERNATIONAL PRODUCT PRICES	(199.421)	(187.556)	(180.934)	(176.970)	(224.207)
- MOVEMENT IN EXCHANGE RATE	34.550	33.184	34.573	34.871	30.997
AVERAGE UNIT OVER/(UNDER) RECOVERY 29/05/2020 - 10/06/2020	(164.872)	(154.373)	(146.361)	(142.099)	(193.210)

R/\$ EXCHANGE RATE - (R/\$16.5761 - 10/06/2020)

EXCHANGE RATE USED IN BASIC FUEL PRICE



INTERNATIONAL PRODUCT PRICES OF BASKET USED IN BASIC FUEL PRICE



BASIC FUEL PRICE IN SA CENTS PER LITRE

